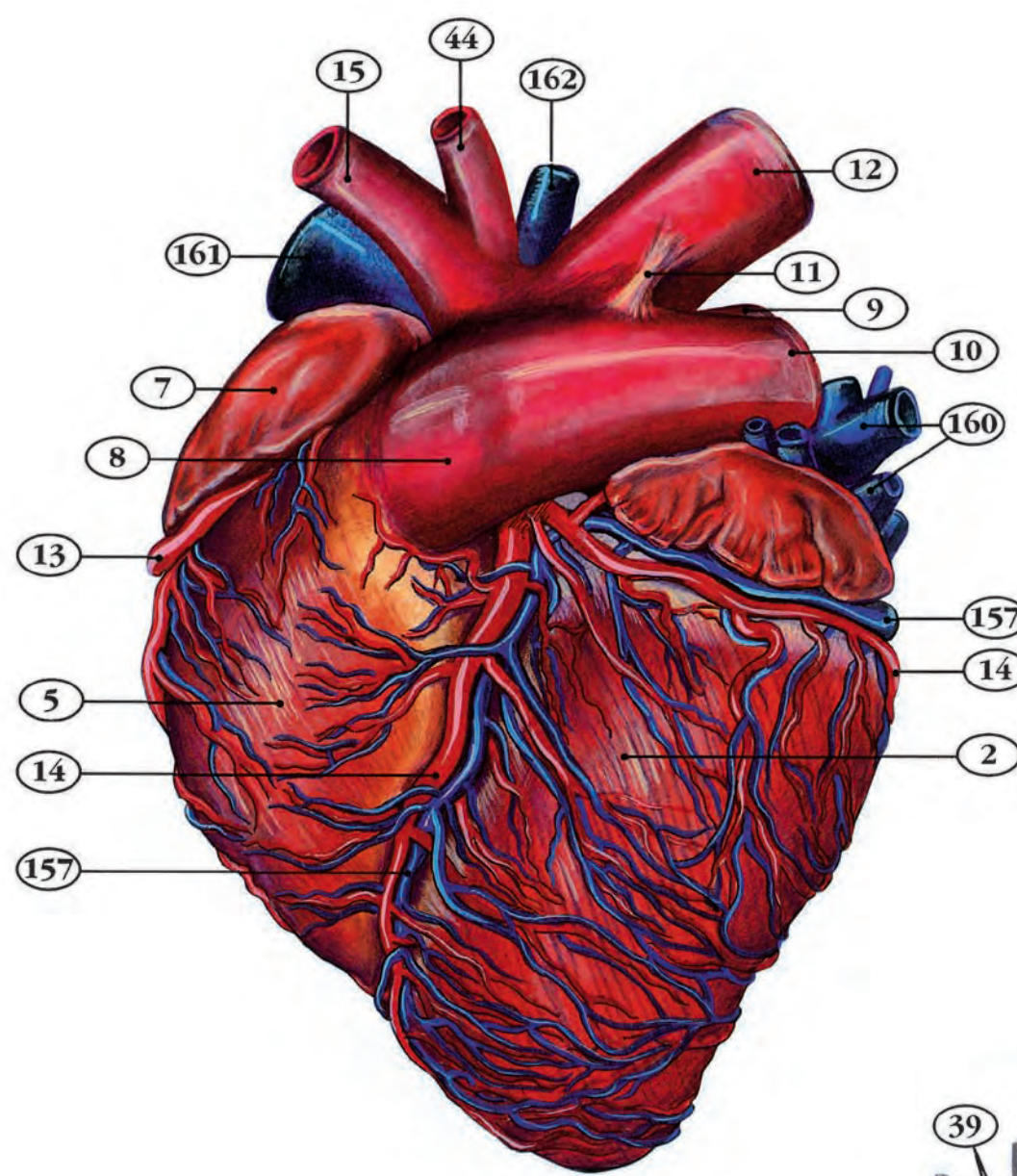
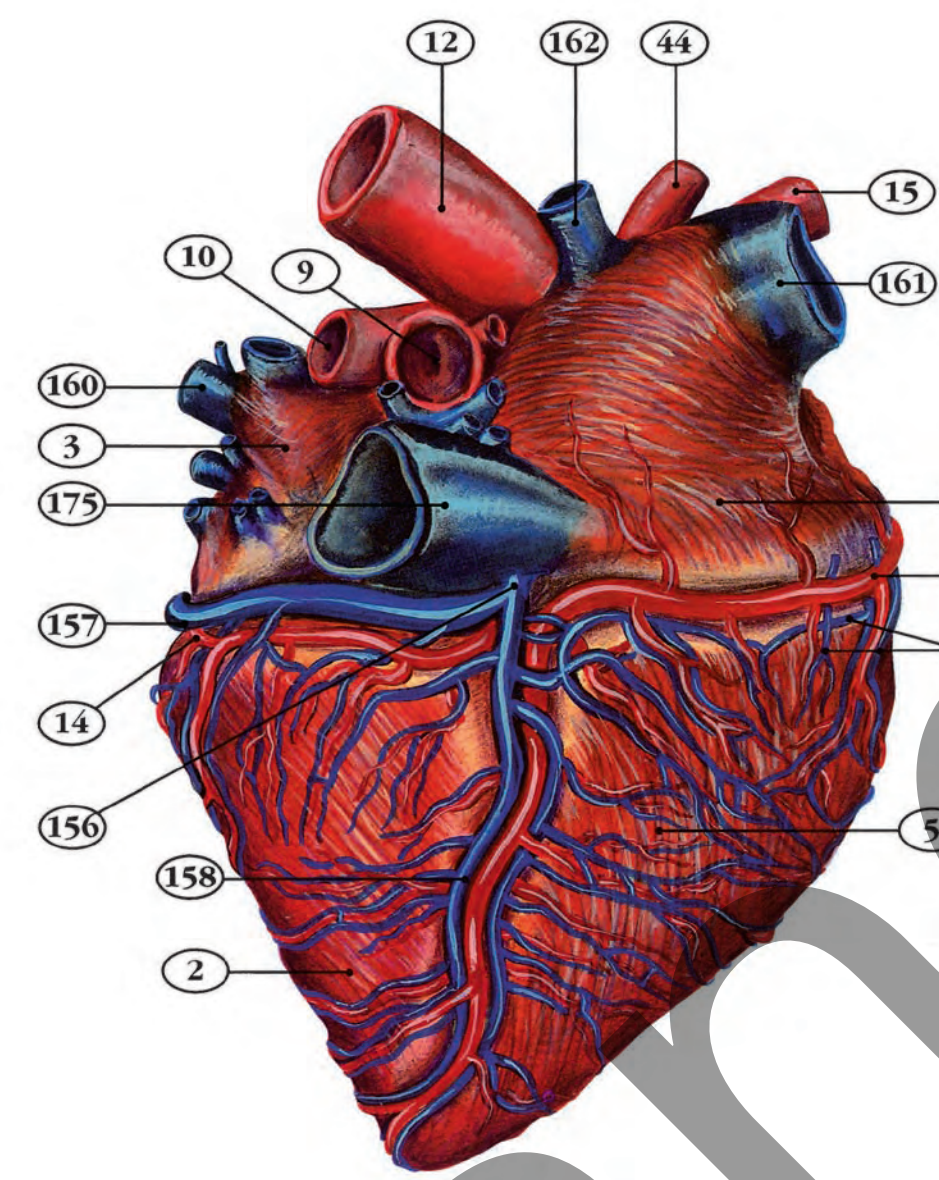


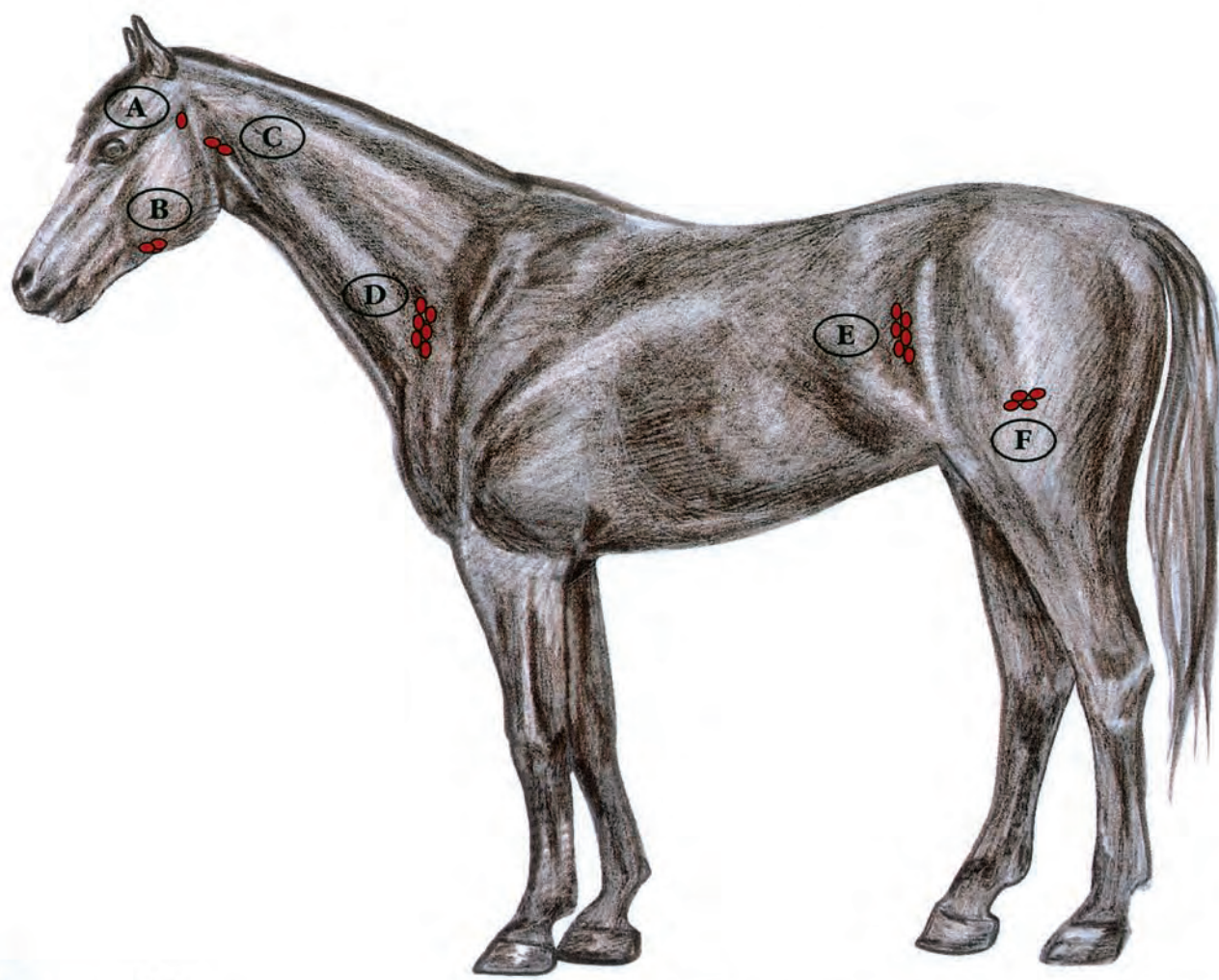
VASCULAR SYSTEM OF THE HORSE



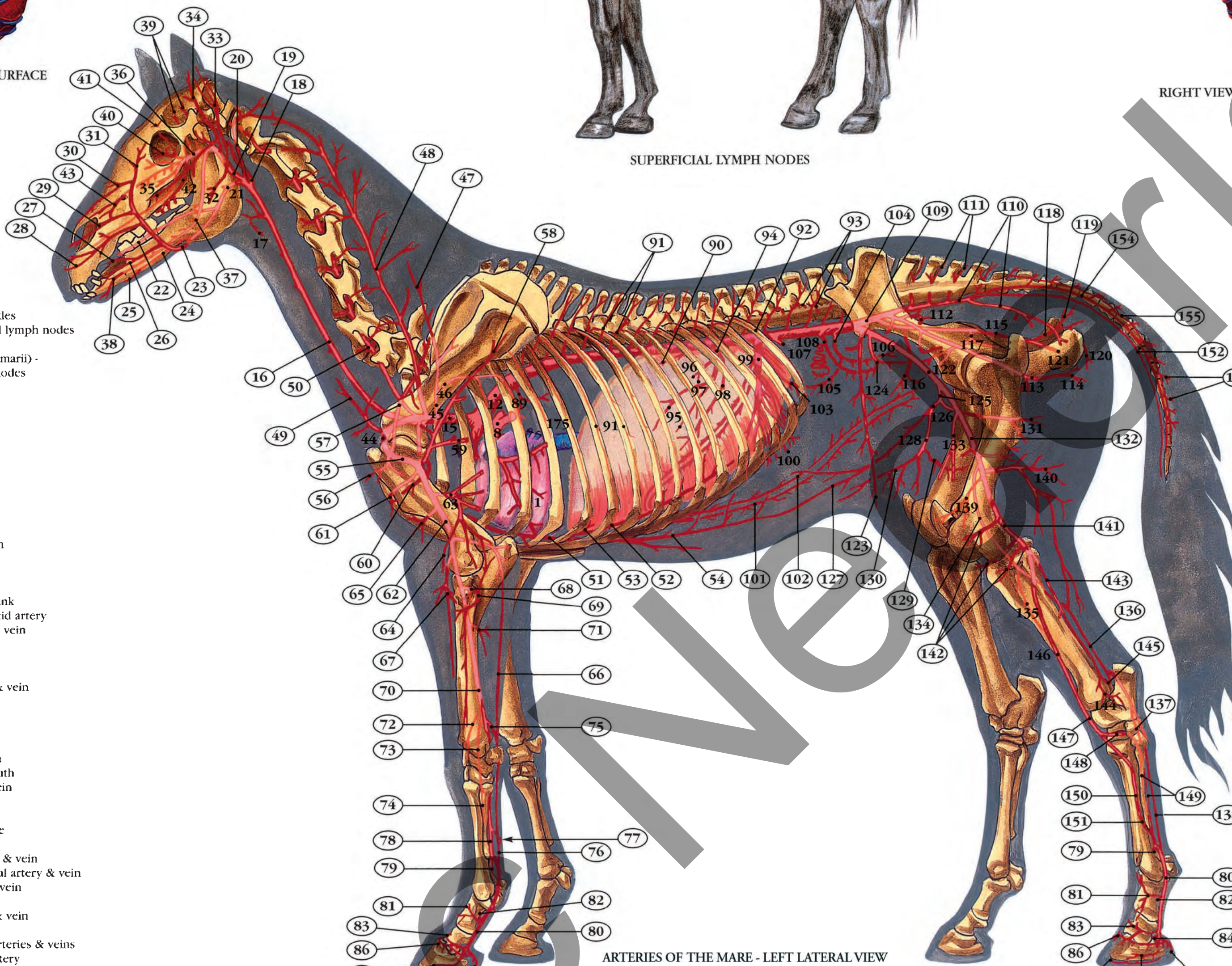
LEFT VIEW OF THE HEART: AURICULAR SURFACE



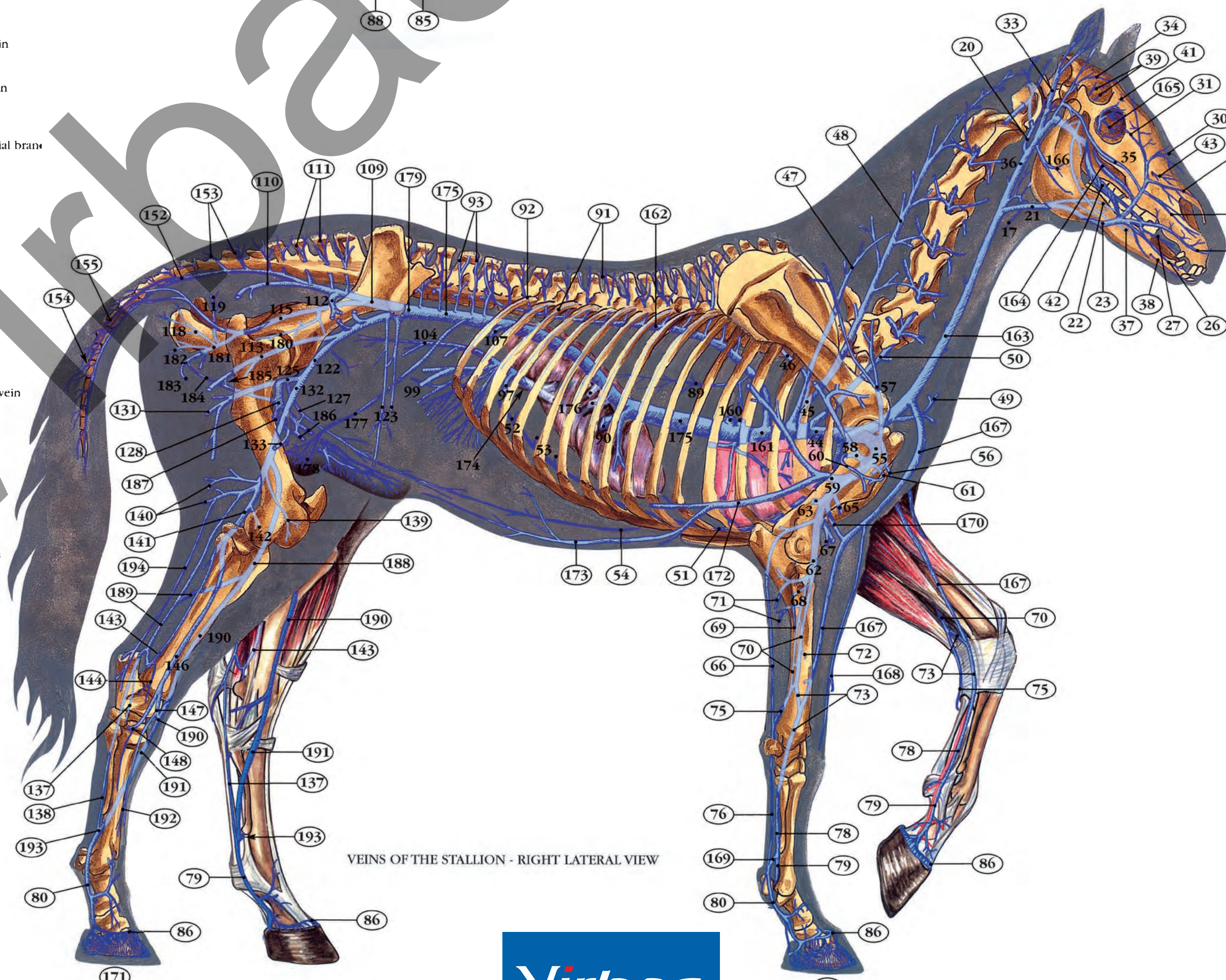
RIGHT VIEW OF THE HEART: ATRIAL SURFACE



SUPERFICIAL LYMPH NODES



ARTERIES OF THE MARE - LEFT LATERAL VIEW



VEINS OF THE STALLION - RIGHT LATERAL VIEW

- A. lnn. parotidei - parotid lymph nodes
- B. lnn. mandibulares - mandibular lymph nodes
- C. lnn. retropharyngei - retropharyngeal lymph nodes
- D. lnn. cervicales superficiales - superficial cervical lymph nodes
- E. lnn. subiliaci - subiliac lymph nodes
- F. lnn. inguinales superficiales (lnn. scrotales/mammarii) - superficial inguinal (scrotal/mammary) lymph nodes

1. cor - heart
2. ventriculus sinister - left ventricle
3. atrium sinistrum - left atrium
4. auricula sinistra - left auricle
5. ventriculus dexter - right ventricle
6. atrium dextrum - right atrium
7. auricula dextra - right auricle
8. truncus pulmonalis - pulmonary trunk
9. a. pulmonalis dextra - right pulmonary artery
10. a. pulmonalis sinistra - left pulmonary artery
11. ligamentum arteriosum - ligamentum arteriosum
12. aorta - aorta
13. a. coronaria dextra - right coronary artery
14. a. coronaria sinistra - left coronary artery
15. truncus brachiocephalicus - brachiocephalic trunk
16. a. carotis communis sinistra - left common carotid artery
17. a.-v. thyroidea cranialis - cranial thyroid artery & vein
18. a. carotis interna - internal carotid artery
19. a. carotis externa - external carotid artery
20. a.-v. occipitalis - occipital artery & vein
21. truncus-vena linguofacialis - linguofacial trunk & vein
22. a.-v. lingualis - lingual artery & vein
23. a.-v. facialis - facial artery & vein
24. a. sublingualis - sublingual artery
25. a. submentalis - submental artery
26. a.-v. labialis inferior - inferior labial artery & vein
27. a.-v. angularis oris - angular artery & vein of mouth
28. a.-v. labialis superior - superior labial artery & vein
29. a.-v. lateralis nasi - lateral nasal artery & vein
30. a.-v. dorsalis nasi - dorsal nasal artery & vein
31. a.-v. angularis oculi - angular artery & vein of eye
32. ramus massetericus - masseteric arterial branch
33. a.-v. auricularis caudalis - caudal auricular artery & vein
34. a.-v. temporalis superficialis - superficial temporal artery & vein
35. a.-v. transversa faciei - transverse facial artery & vein
36. a.-v. maxillaris - maxillary artery & vein
37. a.-v. alveolaris inferior - inferior alveolar artery & vein
38. a.-v. mentalis - mental artery & vein
39. aa.-v. temporales profundae - deep temporal arteries & veins
40. a. ophthalmica externa - external ophthalmic artery
41. a.-v. supraorbitalis - supraorbital artery & vein
42. a.-v. buccalis - buccal artery & vein
43. a.-v. infraorbitalis - infraorbital artery & vein
44. a.-v. subclavia - subclavian artery & vein
45. truncus-vena costocervicalis - costocervical trunk & vein
46. a.-v. intercostalis suprema - supreme intercostal artery & vein
47. a.-v. scapularis dorsalis - dorsal scapular artery & vein
48. a.-v. cervicalis profunda - deep cervical artery & vein
49. a.-v. cervicalis superficialis - superficial cervical artery & vein
50. a.-v. vertebralis - vertebral artery & vein
51. a.-v. thoracica interna - internal thoracic artery & vein
52. a.-v. musculophrenica - musculophrenic artery & vein
53. ramus-vena intercostales ventrales - ventral intercostal arterial branch
54. a.-v. epigastrica cranialis - cranial epigastric artery & vein
55. a.-v. axillaris - axillary artery & vein
56. a.-v. thoracica externa - external thoracic artery & vein
57. a.-v. suprascapularis - suprascapular artery & vein
58. a.-v. subscapularis - subscapular artery & vein
59. a.-v. thoracodorsalis - thoracodorsal artery & vein
60. a.-v. circumflexa humeri caudalis - caudal circumflex humeral artery & vein
61. a.-v. circumflexa humeri cranialis - cranial circumflex humeral artery & vein
62. a.-v. brachialis - brachial artery & vein
63. a.-v. profunda brachii - deep brachial artery & vein
64. a. collateralis radialis - collateral radial artery
65. a.-v. bicipitalis - bicipital artery & vein
66. a.-v. collateralis ulnaris - collateral ulnar artery & vein
67. a.-v. transversa cubiti - transverse cubital artery & vein
68. a.-v. interossea communis - common interosseous artery & vein
69. a.-v. interossea cranialis - cranial interosseous artery & vein
70. a.-v. mediana - median artery & vein
71. a.-v. profunda antebrachii - deep antebrachial artery & vein
72. a. radialis proximalis - proximal radial artery
73. a.-v. radialis - radial artery & vein
74. aa. metacarpeae palmares II-III - medial and lateral palmar metacarpal arteries
75. ramus palmaris - palmar branch (of # 70)
76. a.-v. digitalis palmaris communis III - lateral palmar (common digital) artery and vein
77. arcus palmaris superficialis - superficial palmar arterial arch
78. a.-v. digitalis palmaris communis II - medial palmar (common digital) artery & vein
79. a.-v. digitalis medialis - medial digital artery & vein
80. a.-v. digitalis lateralis - lateral digital artery & vein
81. ramus dorsalis phalangis proximalis - dorsal branch of proximal phalanx
82. ramus palmaris/plantar phalangis proximalis - palmar/plantar branch of proximal phalanx
83. ramus dorsalis phalangis mediae - dorsal branch of middle phalanx
84. ramus palmaris/plantar phalangis mediae - palmar/plantar branch of middle phalanx
85. ramus toni digitalis - branch to digital cushion
86. a.-v. coronalis - coronal artery & vein
87. ramus dorsalis phalangis distalis - dorsal branch of distal phalanx
88. a. marginis solaris - solar border artery
89. a.-v. broncho-oesophagea - broncho-oesophageal artery & vein
90. a.-v. phrenica cranialis - cranial phrenic artery & vein
91. aa.-v. intercostales dorsales - dorsal intercostal arteries & veins
92. a.-v. costoabdominalis dorsalis - dorsal costoabdominal artery & vein
93. aa.-v. lumbales - lumbar arteries & veins
94. a. celiaca - celiac artery
95. a. gastrica sinistra - left gastric artery
96. a. hepatica - hepatic artery
97. a.-v. gastroduodenalis - gastroduodenal artery & vein
98. a. lienalis - lienal artery
99. a.-v. mesenterica cranialis - cranial mesenteric artery & vein

100. aa. jejunales - jejunal arteries
101. ramus colicus - colic branch
102. a. colica dextra - right colic artery
103. a. colica media - middle colic artery
104. a.-v. mesenterica caudalis - caudal mesenteric artery & vein
105. a. colica sinistra - left colic artery
106. a. rectalis cranialis - cranial rectal artery
107. a.-v. renalis - renal artery & vein
108. a. ovarica sinistra - left ovarian artery
109. a.-v. iliaca interna - internal iliac artery & vein
110. a.-v. glutea caudalis - caudal gluteal artery & vein
111. rami sacrales - sacral branches
112. a.-v. glutea cranialis - cranial gluteal artery & vein
113. a.-v. obturatoria - obturator artery & vein
114. a. clitoridis media - middle artery of clitoris
115. a.-v. pudenda interna - internal pudendal artery & vein
116. a. umbilicalis - umbilical artery
117. a. vaginalis - vaginal artery
118. a.-v. perinealis ventralis - ventral perineal artery & vein
119. a.-v. rectalis caudalis - caudal rectal artery & vein
120. ramus labialis dorsalis - dorsal labial branch
121. a. bulbi vestibuli - artery of vestibular bulb
122. a.-v. iliaca externa - external iliac artery & vein
123. a.-v. circumflexa ilium profunda - deep circumflex iliac artery & vein
124. a. uterina - uterine artery
125. a.-v. profunda femoris - deep femoral artery and vein
126. truncus pudendopigasticus - pudendopigastic trunk
127. a.-v. epigastrica caudalis - caudal epigastric artery & vein
128. a.-v. pudenda externa - external pudendal artery & vein
129. a. mammaria caudalis - caudal mammary artery
130. a. mammaria cranialis - cranial mammary artery
131. a.-v. circumflexa femoris medialis - medial circumflex femoral artery & vein
132. a.-v. femoralis - femoral artery & vein
133. a.-v. circumflexa femoris lateralis - lateral circumflex femoral artery & vein
134. a. saphena - saphenous artery
135. ramus cranialis - cranial branch (of # 134)
136. ramus caudalis - caudal branch (of # 134)
137. a.-v. plantaris medialis - medial plantar artery & vein
138. a.-v. plantaris lateralis - lateral plantar artery & vein
139. a.-v. genus descendens - descending genicular artery & vein
140. a.-v. caudalis femoris - caudal femoral artery & vein
141. a.-v. poplitea - popliteal artery & vein
142. aa.-v. genus - genicular arteries & veins
143. a.-v. tibialis caudalis - caudal tibial artery & vein
144. a.-v. malleolaris caudalis lateralis - lateral caudal malleolar artery & vein
145. ramus anastomoticus cum a. saphena - anastomotic branch to saphenous artery
146. a.-v. tibialis cranialis - cranial tibial artery & vein
147. a.-v. dorsalis pedis - dorsal pedal artery & vein
148. a.-v. tarsea perforans - perforating tarsal artery & vein
149. aa. metatarsee plantares II-III - medial and lateral plantar metatarsal arteries
150. a. metatarsea dorsalis III - lateral dorsal metatarsal artery
151. ramus perforans distalis - distal perforating branch
152. a.-v. caudalis mediana - median caudal artery & vein
153. rami caudales - caudal branches
154. a.-v. caudalis ventrolateralis - ventrolateral caudal artery & vein
155. a.-v. caudalis dorsolateralis - dorsolateral caudal artery & vein

156. sinus coronarius - coronary sinus
157. v. cordis magna - great cardiac vein
158. v. cordis media - middle cardiac vein
159. vv. cordis dextrae - right cardiac veins
160. vv. pulmonales - pulmonary veins
161. v. cava cranialis - cranial vena cava
162. v. azgygos dextra - right azgygos vein
163. v. jugularis externa dextra - right (external) jugular vein
164. v. profunda faciei - deep facial vein
165. plexus ophthalmicus - ophthalmic venous plexus
166. v. masseterica ventralis - ventral masseteric vein
167. v. cephalica - cephalic vein
168. v. cephalica accessoria - accessory cephalic vein
169. arcus palmaris profundus distalis - distal deep palmar venous arch
170. v. mediana cubiti - median cubital vein
171. plexus unguinalis - ungular venous plexus
172. v. thoracica superficialis - superficial thoracic vein
173. v. epigastrica cranialis superficialis - cranial superficial epigastric vein
174. v. portae - portal vein
175. v. cava caudalis - caudal vena cava
176. v. hepaticae - hepatic veins
177. v. testicularis - testicular vein
178. plexus pampiniformis - pampiniform plexus
179. v. iliaca communis - common iliac vein
180. v. prostatica - prostatic vein
181. v. penis - vein of penis
182. v. bulbi penis - vein of bulb of penis
183. v. profunda penis - deep vein of penis
184. v. dorsalis penis - dorsal vein of penis
185. v. penis media - middle vein of penis
186. v. penis cranialis - cranial vein of penis
187. v. pudenda externa accessoria - accessory external pudendal vein
188. v. saphena medialis - medial saphenous vein
189. ramus caudalis - caudal branch (of # 188)
190. ramus cranialis - cranial branch (of # 188)
191. v. digitalis dorsalis communis II - dorsal common digital vein II
192. v. metatarsea dorsalis II - medial dorsal metatarsal vein
193. arcus plantaris profundus distalis - distal deep plantar venous arch
194. v. saphena lateralis - lateral saphenous vein

